


Article **35** **0** **😊 0%** **😐 0%** **😞 0%**
 Overview Views Conversations Reacted

Published

<https://intercom.help/optiqo/en/articles/2224882-optiqo-report-dashboards>
[\(https://intercom.help/optiqo/en/articles/2224882-optiqo-report-dashboards\)](https://intercom.help/optiqo/en/articles/2224882-optiqo-report-dashboards)

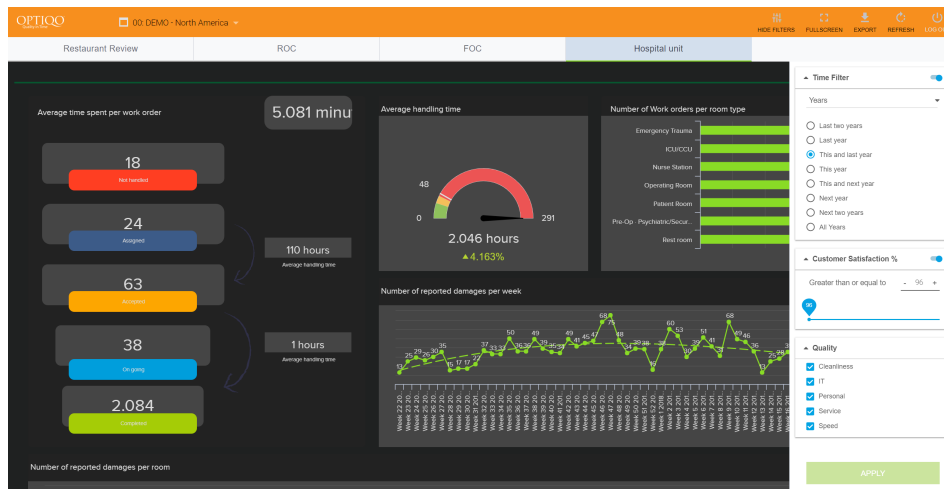
Optiqo.report dashboards

English

 Written by David Freland
 Updated over a week ago

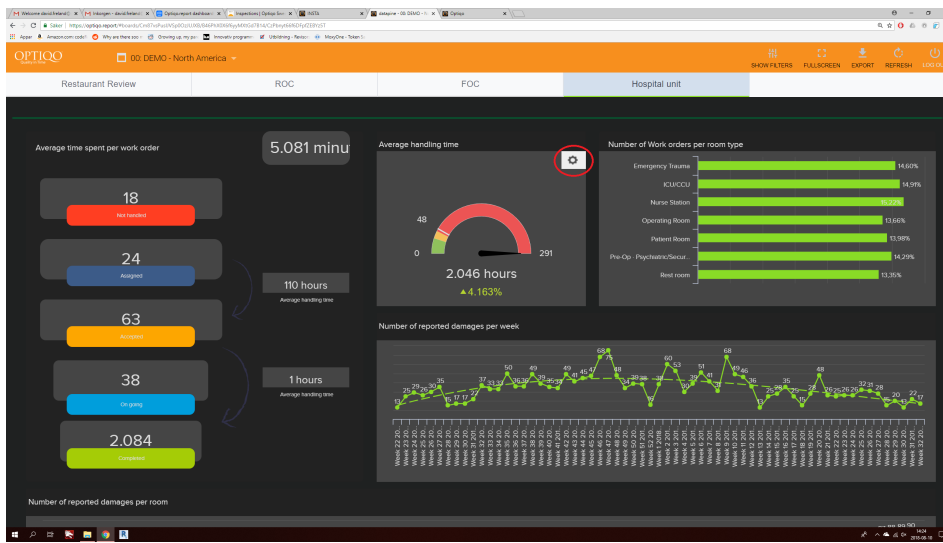
Go to <https://optiqo.report> (<https://optiqo.report/>) and login.

Choose a dashboard.



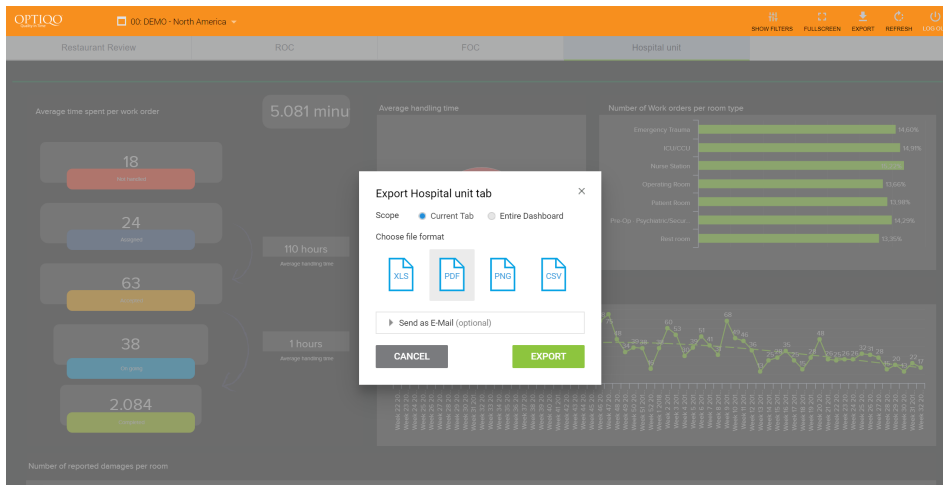
https://downloads.intercomcdn.com/i/o/71436962/d0657c97b868ae8ff3976472/joxi_screenshot_1533903161140.png

Once on the dashboard there's a button called show filters. If there are any filters you can activate/unactivate them. It is also possible to change the filters options to your needs.



(<https://downloads.intercomcdn.com/i/o/71437076/61edbf757a3908c32b4f002c/Namnl%C3%B6s.png>)

Hover the mouse over a graph and press the cogwheel for a dropdown menu. There you can choose between zooming the graph, show the data in another view and export the data to excel.



(https://downloads.intercomcdn.com/i/o/71437089/7095ab3c9a5e1eda36e3d6f6/joxi_screenshot_1533903217162.png)

It is possible to export the dashboard to csv, pdf, png and excel aswell as email.